

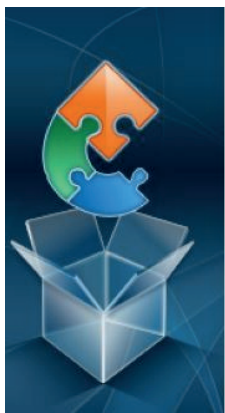
MIX 2.0 - UPDATE PROCEDURE

1. INSTALLING THE DRIVERS

- Uncompress the mix update software (preferably on your desktop).
- Open the folder.
- Launch **lct_installer_1.exe** to install the drivers.

Name	Status	Date modified
DFUSec.exe	✓	18/12/2017 17:45
DFUUTIL.ini	✓	20/08/2019 15:25
iram_dfu_util_any.bin.hdr	✓	18/12/2017 17:45
lct_installer_1.exe	✓	09/03/2018 13:54
Mix-Update-Procedure-01.pptx	✓	20/08/2019 16:21

- Follow the procedure. Untick all boxes when the installation is finished. The software should close.



Completing the LPC-Link 2 Configuration Tool Setup Wizard

Click the "Finish" button to exit the Setup Wizard.

untick

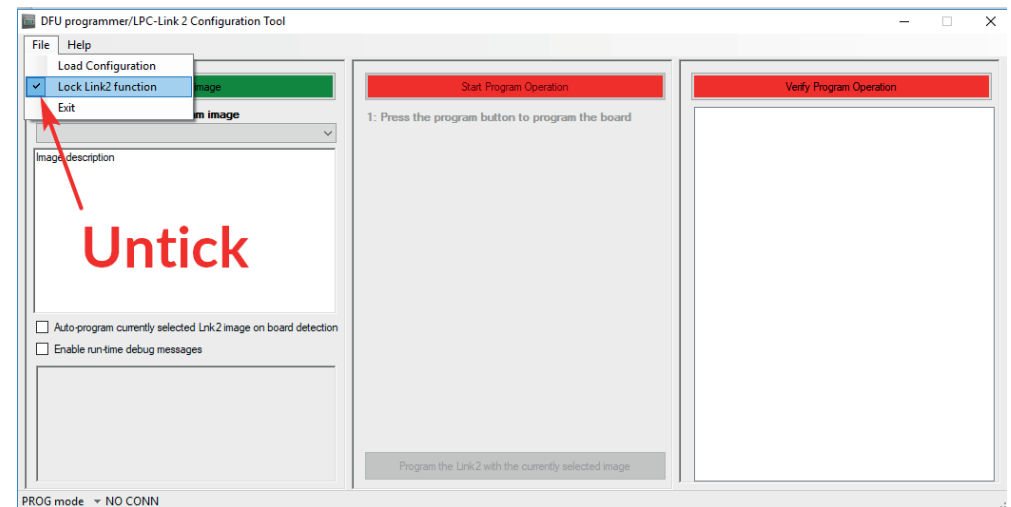
- ☐ View readme file
- ☐ Launch LPC-Link 2 Configuration Tool

2. LAUNCHING AND CONFIGURING

- Go back to the folder and launch **DFUSec.exe**:

DFUSec.exe	✓	18/12/2017 17:45
DFUUTIL.ini	✓	20/08/2019 16:48
iram_dfu_util_any.bin.hdr	✓	18/12/2017 17:45
lct_installer_1.exe	✓	09/03/2018 13:54
Mix-Update-Procedure-01.pptx	✓	20/08/2019 16:47

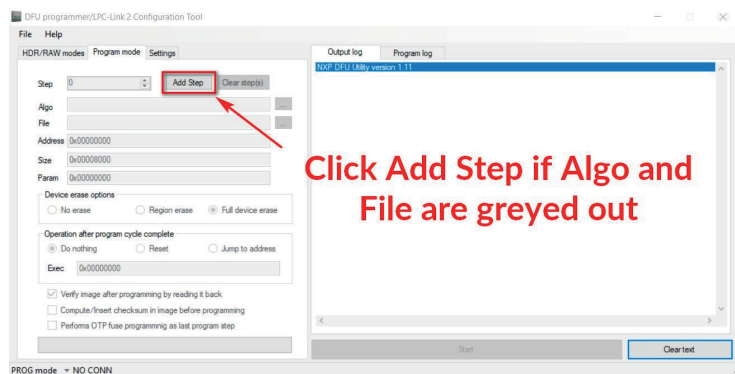
- Go to File and untick **Lock LINK2 function**:



MIX - UPDATE PROCEDURE

2. LAUCHING AND CONFIGURATING (CONTINUED)

- You will arrive at the windows below. If Algo and File are greyed out, please add a step on clicking **Add Step**. If they are not greyed out, go to the next page of this procedure.



- Select the programing algorithm in the Mix Update software folder, called **iram_dfu_util_any.bin.hdr**

Step 0 Add Step Clear step(s)

Algo **Select Algo** →

File

Address 0x00000000

Size 0x00008000

Param 0x00000000

- Select the latest firmware you have downloaded from the website:

Algo ..\..\PRODUCT MANAGERS - General\MIX V2\MIX UPC

File **select the firmware** →

Address 0x00000000

Size 0x00008000

Param 0x00000000

- Fill up the configuration options exactly like the picture below:

Step 0 Add Step Clear step(s)

Algo iram_dfu_util_any.bin.hdr

File ..\..\FIRMWARES\MIX\CONTROLLER\UPCOMING\MIX-V

Address 0x1a000000 → 0x1a000000

Size 0x1000000 → 0x1000000

Param 0x00000000 → 0x00000000

Device erase options

☐ No erase ☐ Region erase ☒ Full device erase

Operation after program cycle complete

☒ Do nothing ☐ Reset ☐ Jump to address

Exec 0x00000000

☐ Verify image after programming by reading it back → **Untick**

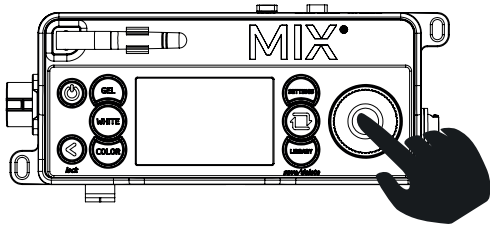
☐ Compute/Insert checksum in image before programming

☐ Performs OTP fuse programmig as last program step

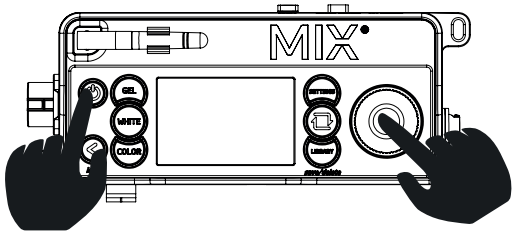
MIX - UPDATE PROCEDURE

3. UPDATING

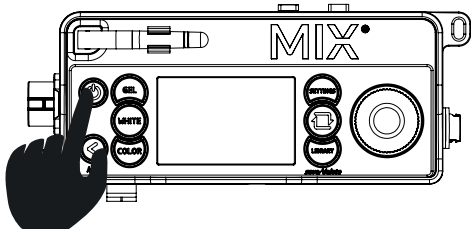
- Connect the MIX controller to a power supply. If the controller turns ON, turn it back OFF.
- Connect the MIX controller to this PC using a USB to Micro USB cable.
- Press the Red dimmer button and keep it pressed:



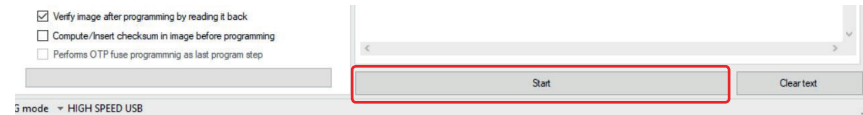
- Turn on the MIX controller while keeping the dimmer button pressed:



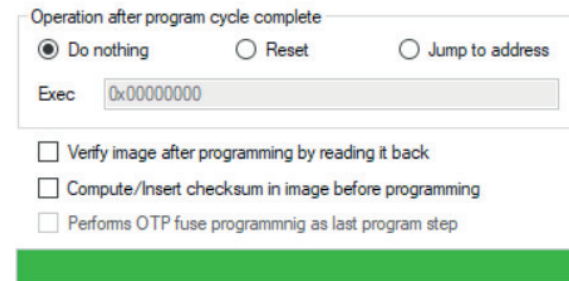
- Do not release the ON/OFF button!
- Release the dimmer button but keep the on/off button pressed.



- **Start** button will turn from grey to normal if the mix is started properly in update mode.
- **Click the Start button in DFUsec to update the MIX:**



- Make sure the update was successful. The green bar should be full.



- Disconnect from the power supply and reconnect. Turn the controller back ON.
- To verify the proper firmware is in the MIX controller, go to SETTINGS/INFORMATION and verify the firmware version.

ALL DONE, ENJOY !